

Minutes or miles? Which would you choose?

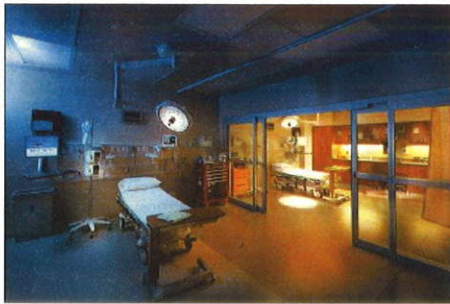
Pawnee Valley Community Hospital is providing quality medical services administered by skilled medical staff to you locally.

Our Hospital Services Include:

Emergency Care

The Pawnee Valley Community Hospital Emergency Department is a open 24 hours a day, 7 days a week and is staffed with a 24 hour on call provider. PVCH is here to

meet all emergency care needs including but not limited to chest pain evaluations, respiratory patients, lacerations, headache, fever, abdominal pain and trauma. Trauma patients will be stabilized for transport. Also on the PVCH Campus is the helicopter landing pad for patients who need to be transported out for urgent specialized care.



Acute & Skilled Nursing

We provide comprehensive rehabilitation services for patients who no longer require acute care but are not quite ready to return home. Care provided



within this setting allows patients to participate in rehabilitation while in their own community with the support of their family and friends.

Specialized Nursing Services

Special Nursing Services includes but is not limited to IV infusion of antibiotics, blood and blood product administration, medication injections, venous access devices for blood draws for both adult and pediatric patients, allergy injections, wound care and PICC line care.

Operating Room

In Pawnee Valley Community Hospital's Operating Room we currently are performing:

- **Colonoscopies**
- **Cataract Surgery**
- **PICC Line placement**
- **Dental Surgery**



High Complexity Laboratory

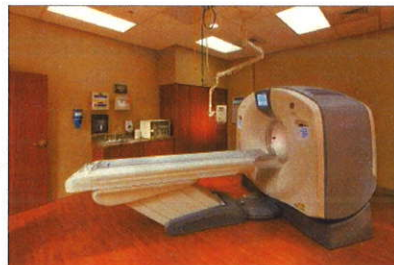
The Laboratory is a CLIA certified state-of-the-art facility that offers a wide diagnostic test menu. Laboratory services include chemistry, hematology, coagulation, urinalysis, and point-of-care testing.

Pat Young Imaging Center

- **64 Slice Low Dose CT Scanner**
- **Wide-bore Short-Tube 1.5 Tesla MRI**
- **Nuclear Medicine Testing**
- **Bone Density (Dexascan)**
- **Digital Portable X-Ray**
- **Digital Mammography**
- **Ultra Sound**
- **X-Ray**

Coming Soon:
C-Arm
Fluoroscopy

Pictured: 64 Slice CT Scanner



Physical Therapy & Advanced Rehabilitation

The inpatient and outpatient rehabilitation services at PVCH Physical Therapy and Advanced Rehabilitation are committed to giving patients the best personalized care possible. Our caring staff consists of experienced therapists who provide comprehensive one-on-one care to patients with many types of pain, disorders or illnesses that limit their daily activities. Our program includes:

- **Physical Therapy**
- **Occupational Therapy**
- **Speech Therapy**
- **Lymphedema Therapy**

Cardiac & Pulmonary

Area patients with lung disorders or suffering from heart attack or stroke requiring cardiopulmonary rehabilitation can access those services at PVCH using cutting edge equipment and technology guided by fully trained and licensed therapists.

- **Respiratory Therapy**
- **Cardiac & Pulmonary Rehab**
- **Cardiac Nuclear Stress Testing**
- **EEG**

Sleep Disorder Center

PVCH's Sleep & Diagnostic Center is a state of the art sleep center fully accredited by the American Academy of Sleep Medicine. All aspects of the sleep center have been designed with the patient in mind. It features two private rooms with a relaxed home-like atmosphere.

Dr. Son Truong oversees the PVCH Sleep and Diagnostic Center. He is board certified in critical care, sleep medicine, internal medicine and pulmonary diseases.

Patients will have their sleep study done at PVCH throughout the month and then follow up with Dr. Truong in Larned during his monthly clinic.



Patient & Visitor Information

Patient Visiting Hours: 8:00 a.m. to 8:30 p.m. through the Hospital's Lobby doors.

Patient Visitor Services include:

Wheel chair transportation to areas throughout the hospital. To use this service contact a staff nurse for assistance.

Patient Visitor Galley:

Beverages and snacks are available to immediate family members of patients in the Patient Visitor Galley area. To use this service contact a staff nurse.

Free coffee, latte and cappuccino is also available in the service area across from the hospital cafeteria. Culligan Water dispensers are available throughout the hospital.

Family Visiting Room:

The family visiting room is located in the southeast corner of the hospital and features a large salt water aquarium and television. It is available 24- hours during the day and contains items for patients and families to use during their stay including: games, playing Cards and Puzzles. To use this service contact a staff nurse or you can visit the family visitors room on your own.

Pawnee Valley Community Hospital Café:

Hours: Open 7:30 a.m. - 1:00p.m.;
Closed 1—2:00;
Open 2:00 - 4:00 p.m.

Breakfast served: 7:30 a.m. - 9:00 a.m.

Hot Lunch served: 11:00 a.m. - 1:00 p.m.

Grab & Go Offerings: 2:00 p.m. - 4:00 p.m.

Vending Machines are located in the ER Waiting Room.

PAWNEE VALLEY COMMUNITY HOSPITAL

NON DISCRIMINATION STATEMENT

As a recipient of Federal financial assistance, Pawnee Valley Community Hospital does not exclude, deny benefits to, or otherwise discriminate against any person on the basis of race, color, national origin, disability or age in admission to, participation in, or receipt of the services and benefits under any of its programs and activities, whether carried out by Pawnee Valley Community Hospital directly or through a contractor or any other entity with which Pawnee Valley Community Hospital arranges to carry out its programs and activities.

This statement is in accordance with the provisions of Title VI of the Civil Rights Act of 1964, Section 504 of the Rehabilitation Act of 1973, the Age Discrimination Act of 1975, and Regulations of the U.S. Department of Health and Human Services issued pursuant to these statutes at Title 45 Code of Federal Regulations Parts 80, 84, and 91.

In case of questions, please contact:

In-House Counsel/Corporate Compliance Officer
Hays Medical Center
2220 Canterbury Drive
Hays KS 67601
Telephone Number: (785) 650-2759
TDD or State Rely number: (785) 650-2759



923 Carroll - Larned, Ks - 620-285-3161

Patient Centered

Community Driven



PAWNEE VALLEY COMMUNITY HOSPITAL

A HAYSMED PARTNER

Where Patient Care Is Our Top Priority



620.285.3161

www.pawneevalleyhospital.com

923 Carroll Avenue, Larned, Ks 67550